

# LAWRENCE HIGH SCHOOL



# AGENDA

Masterplan Goals

Schedule

Design Overview

Building System Upgrades

Overall Scope of Work

Phasing

Budget

# MASTERPLAN GOALS

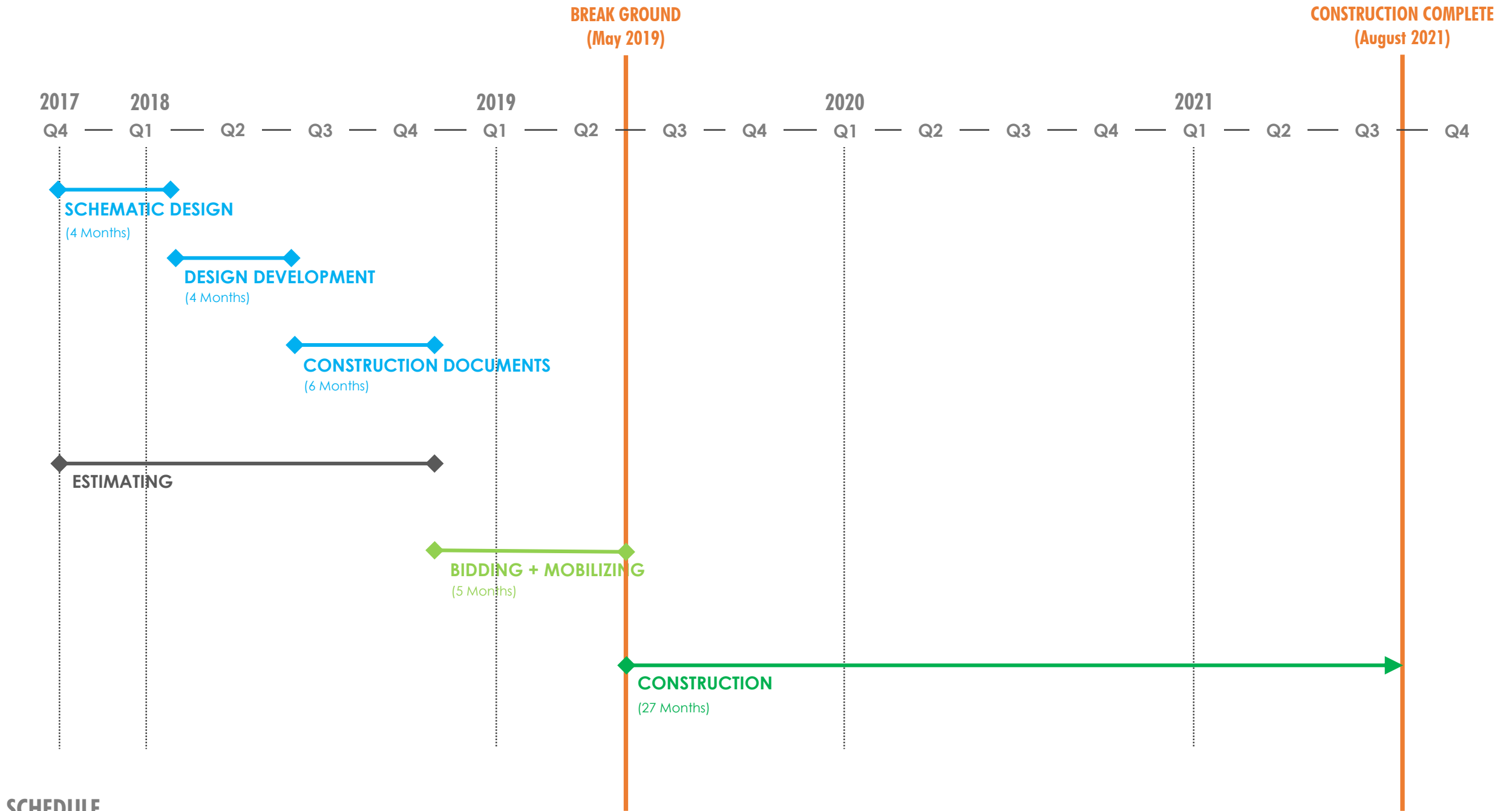
1. Create 21<sup>st</sup>-century learning environments supporting student-centered learning
2. Accommodate a growing student population
3. Provide a safe and secure campus
4. Accommodate student privacy
5. Create equity across the district
6. Strategic MEP and systems upgrades

# SCHEDULE

Design Started in Fall 2017

Construction Begins May 2019

Construction Complete August 2021

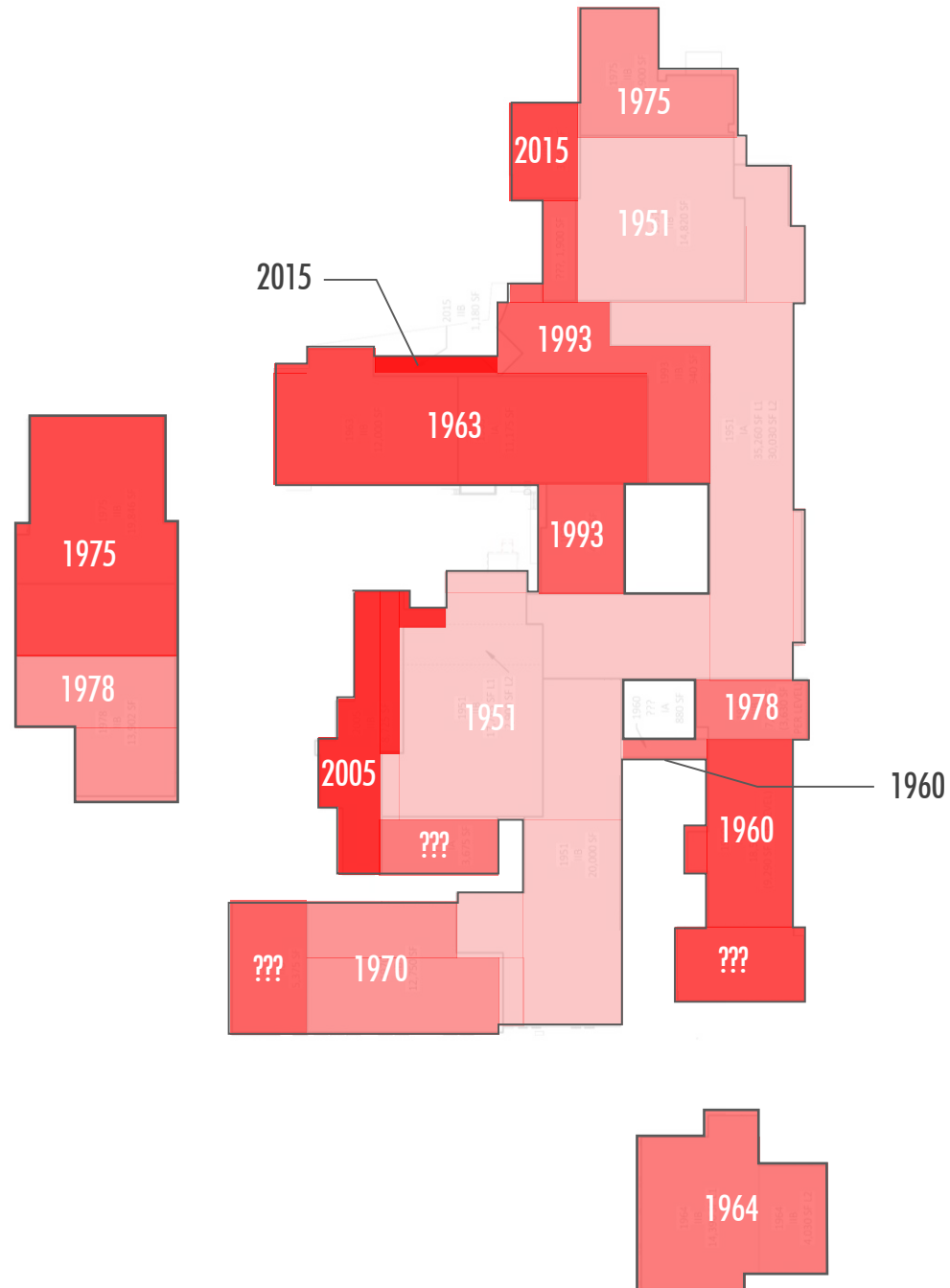


# DESIGN

1. Clear Wayfinding
2. One Secure Campus
3. Student Privacy
4. Student Support + Success Center
5. Dining, Commons + Media Center
6. Innovation Corridor
7. Classroom Corridor
8. Performing Arts
9. Wellness + Athletics
10. Outdoor Learning Space

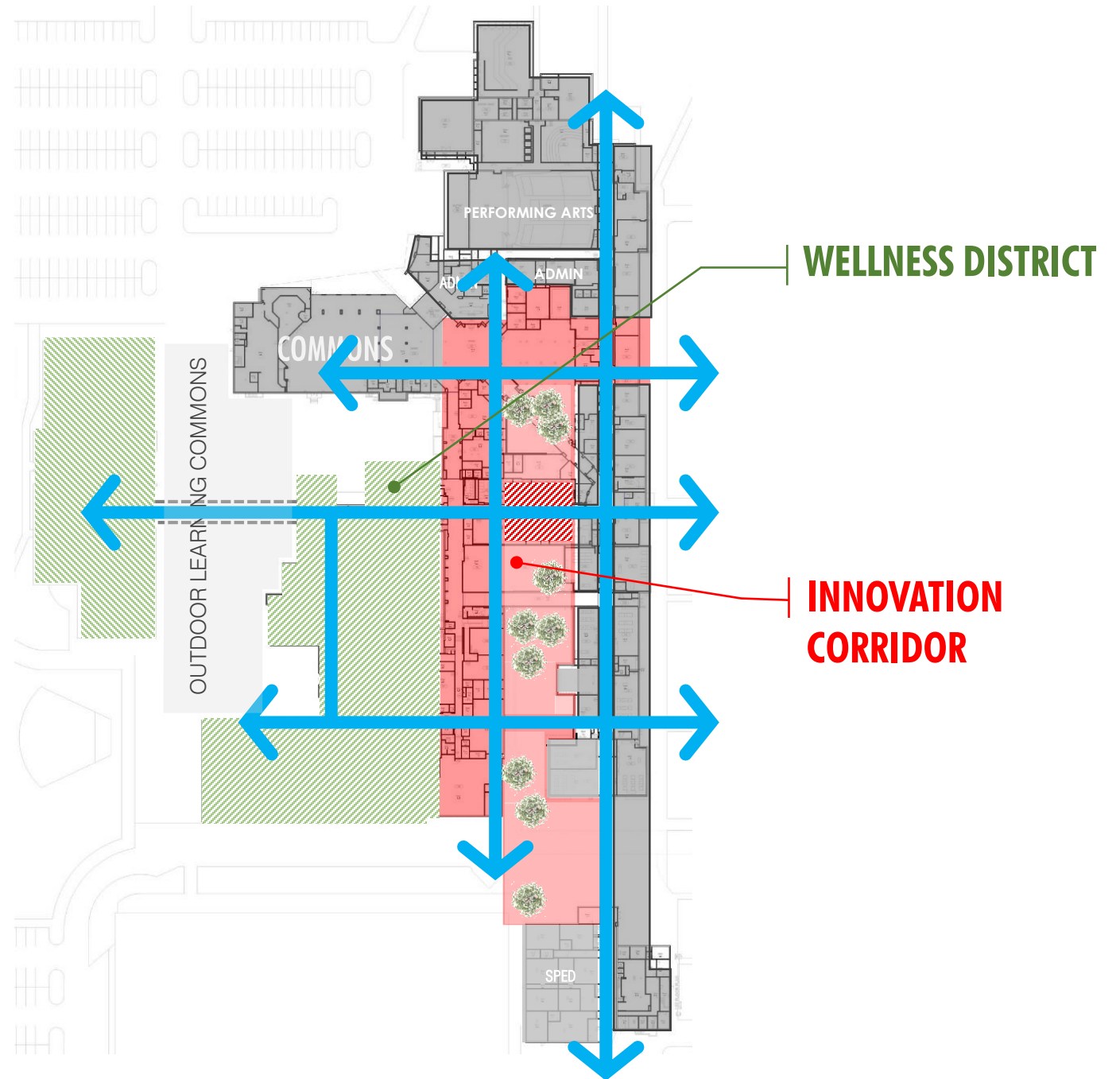
1

# (not so) CLEAR WAYFINDING



1

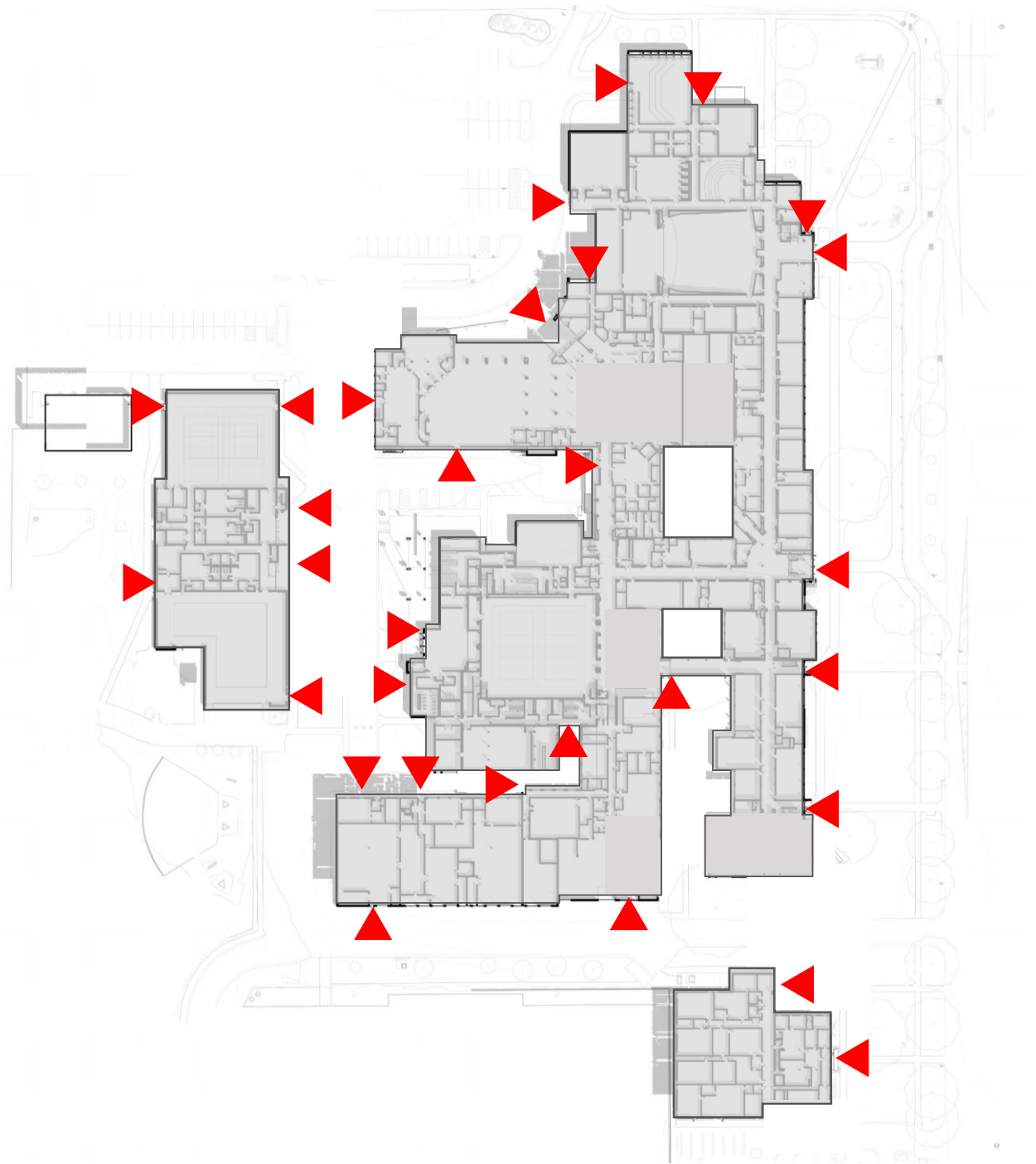
# CLEAR WAYFINDING





2

## ONE SECURE CAMPUS



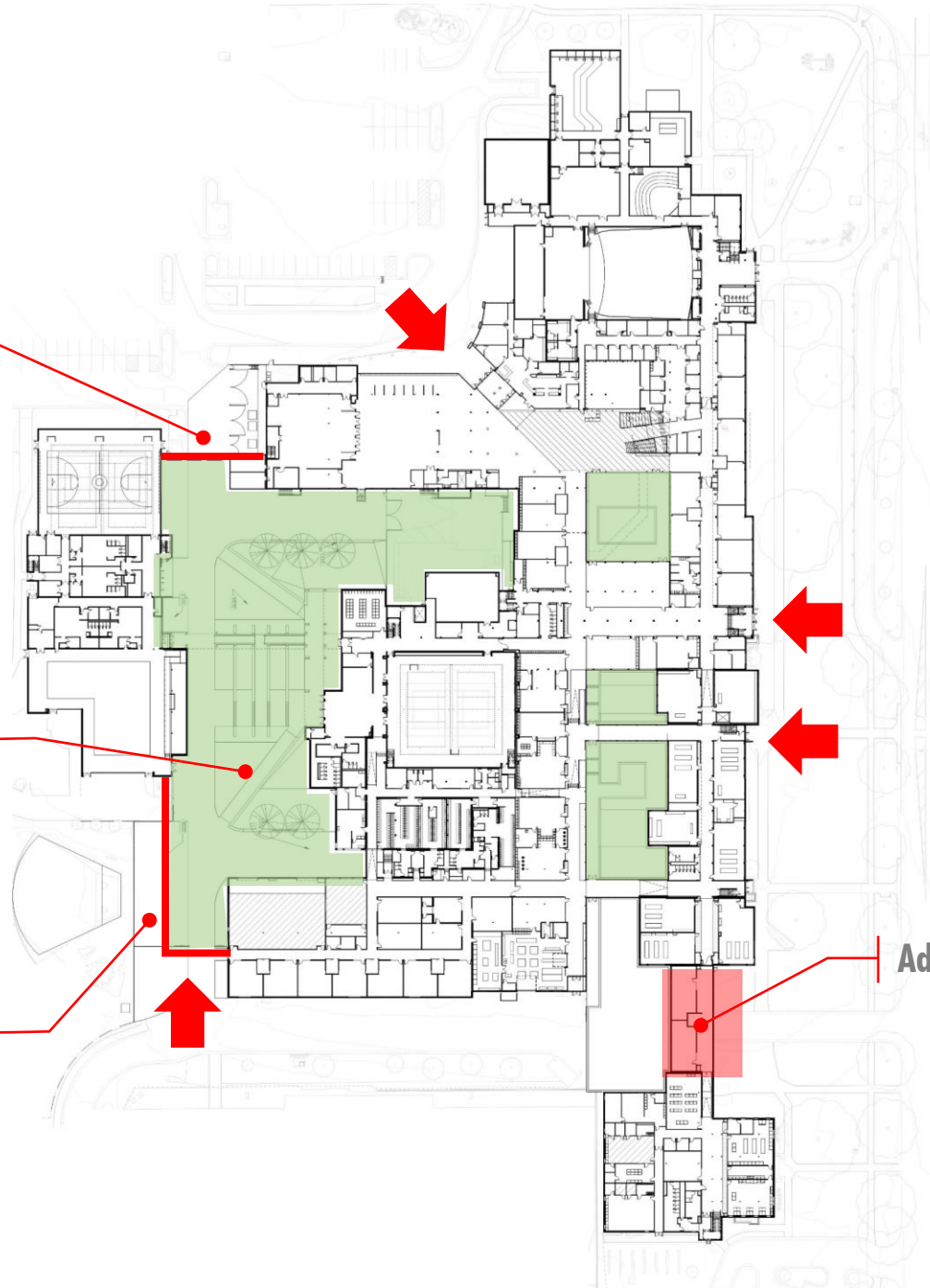
**Security Gate**

**Secure West Courtyard**

**Security Gate**

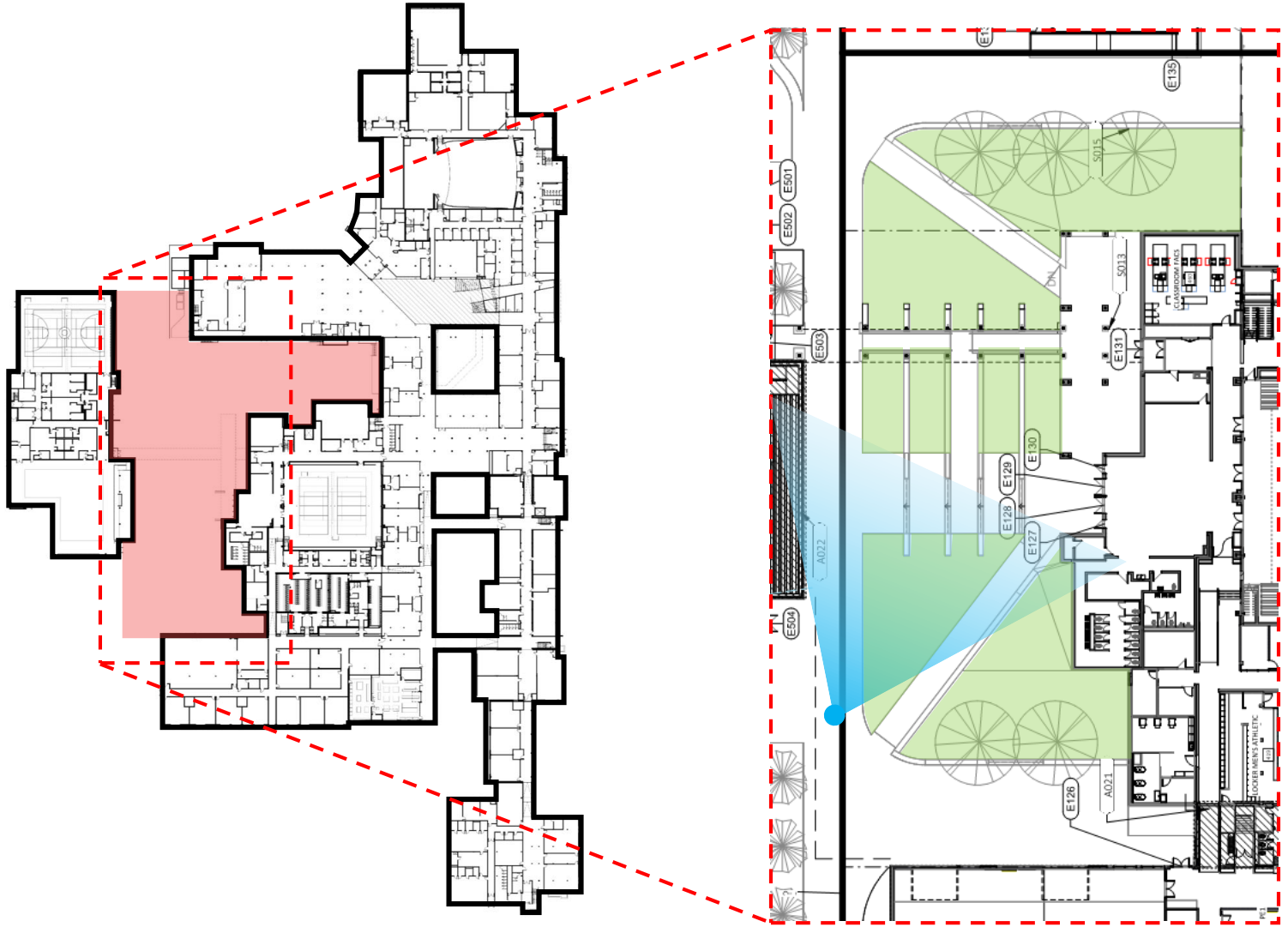
**Addition**

**ONE SECURE CAMPUS**





Existing Courtyard



New West Courtyard



North Parking Lot

Planters

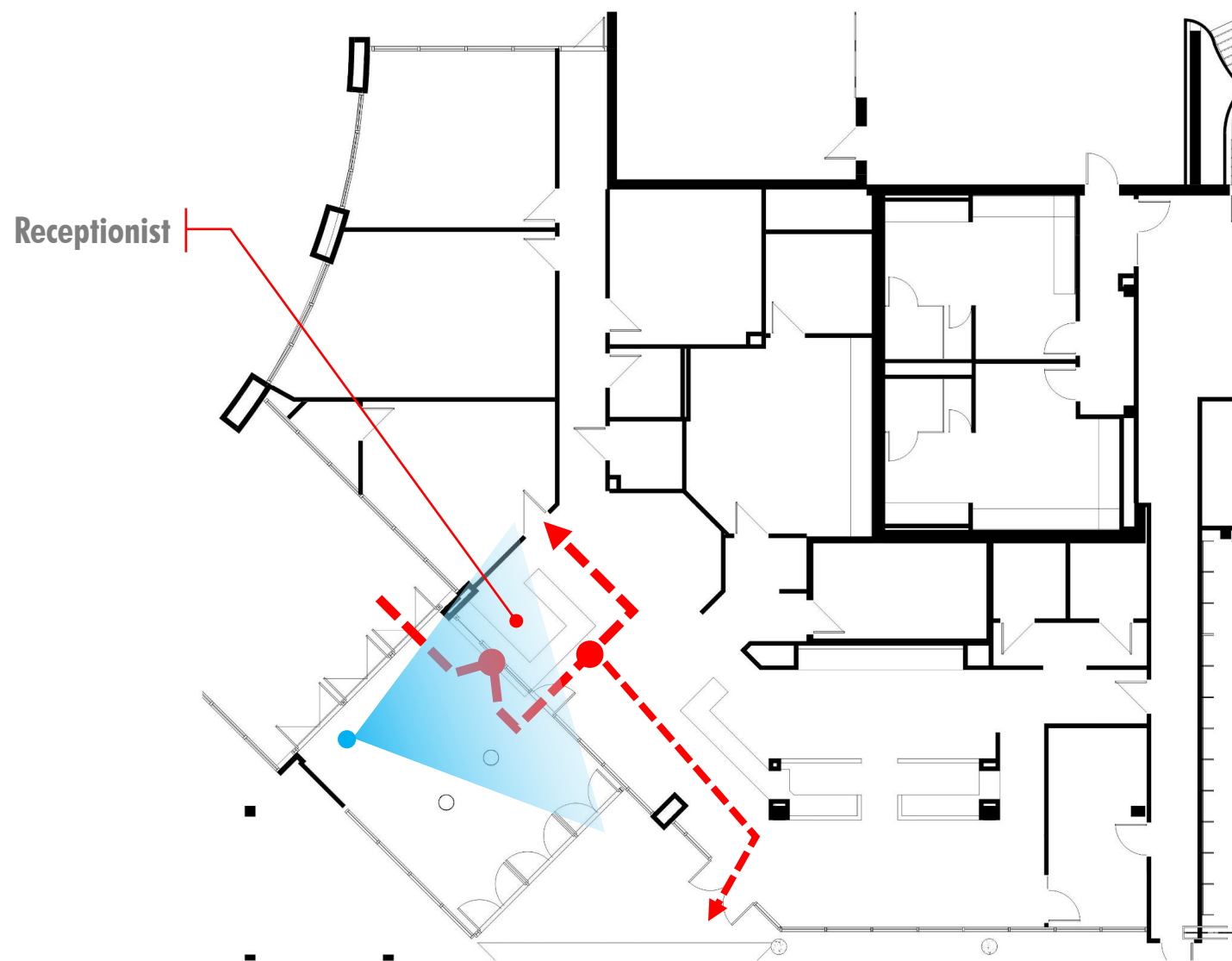
Terraced Seating

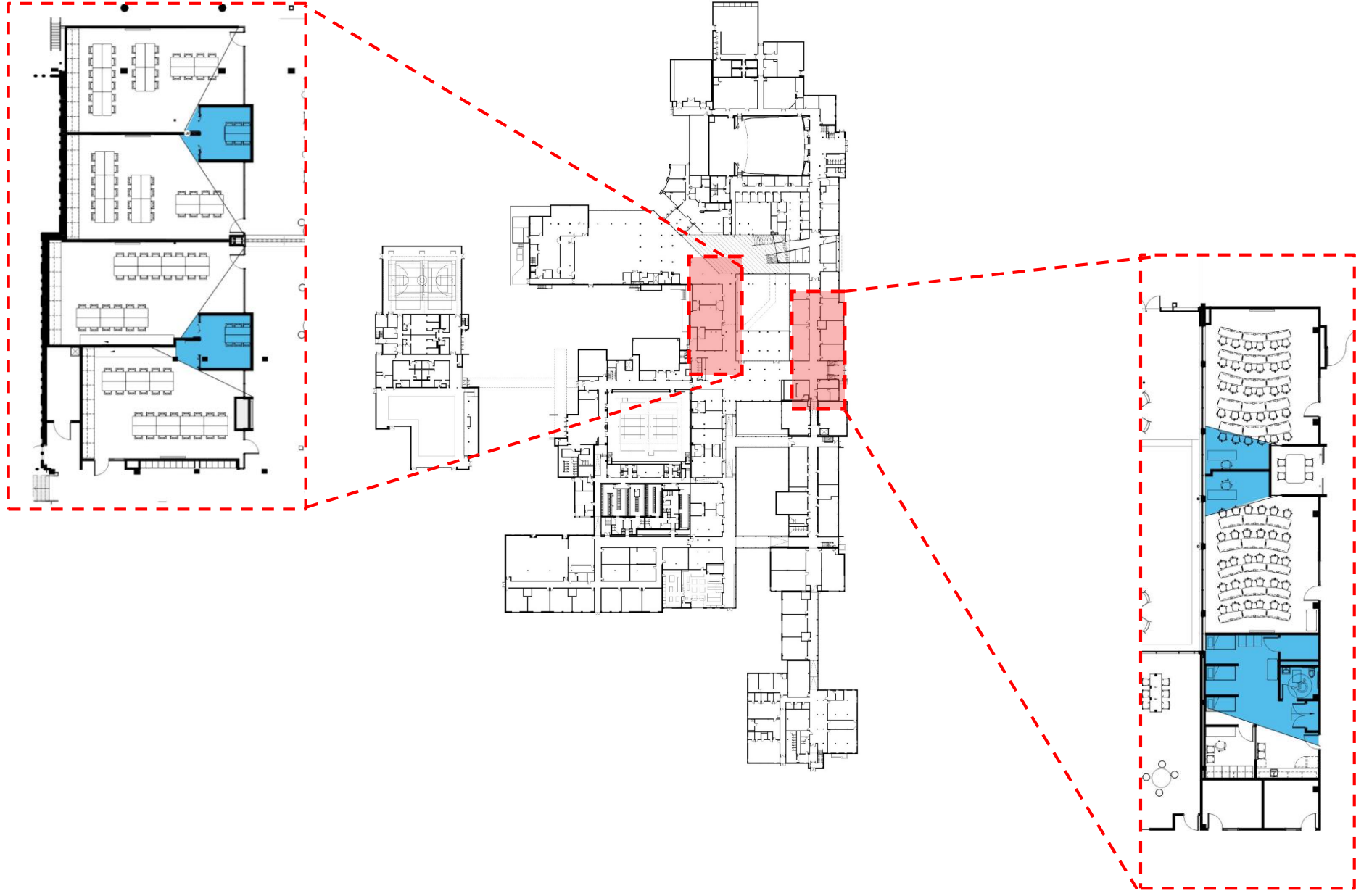


View in West Courtyard



View toward Main Office





3

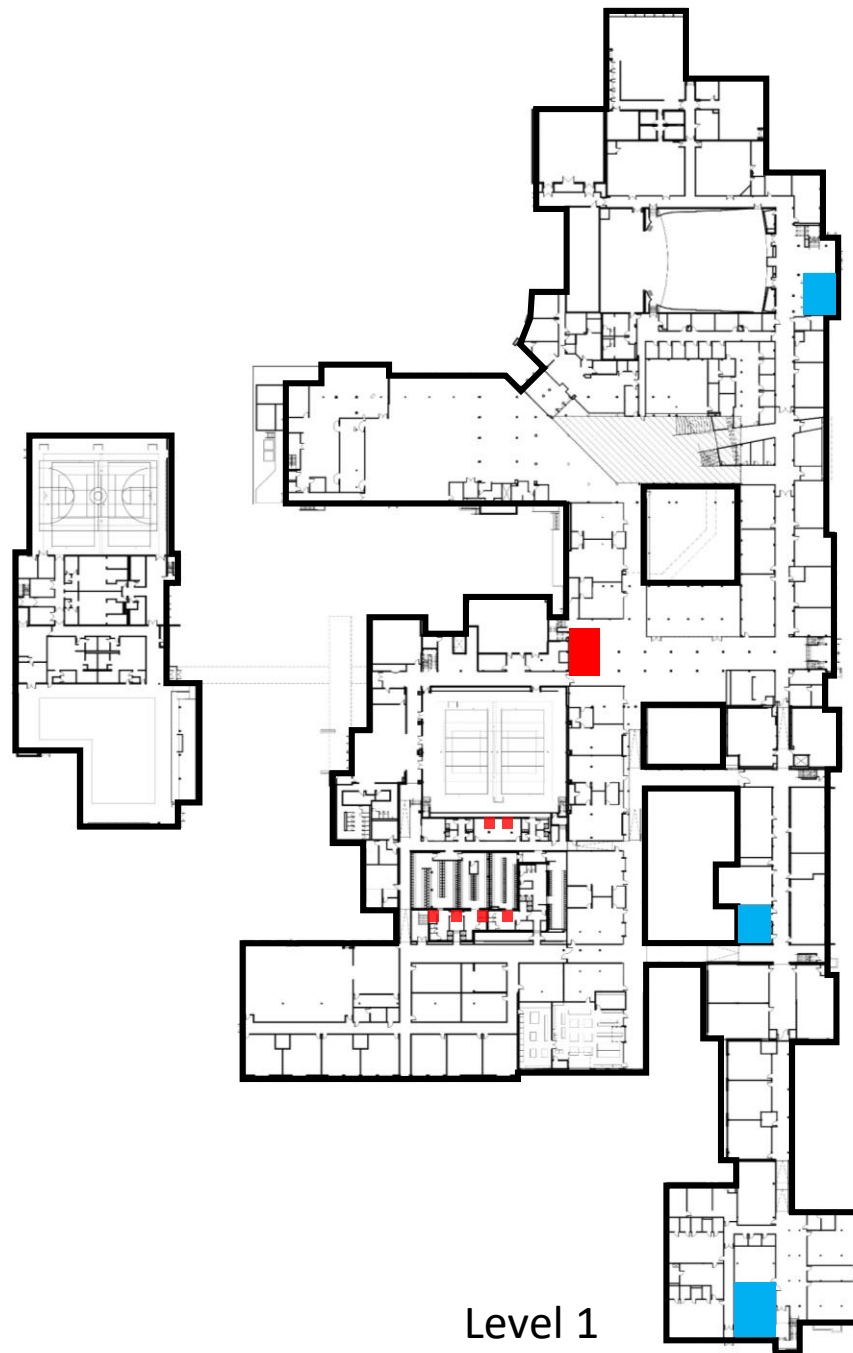
# STUDENT PRIVACY



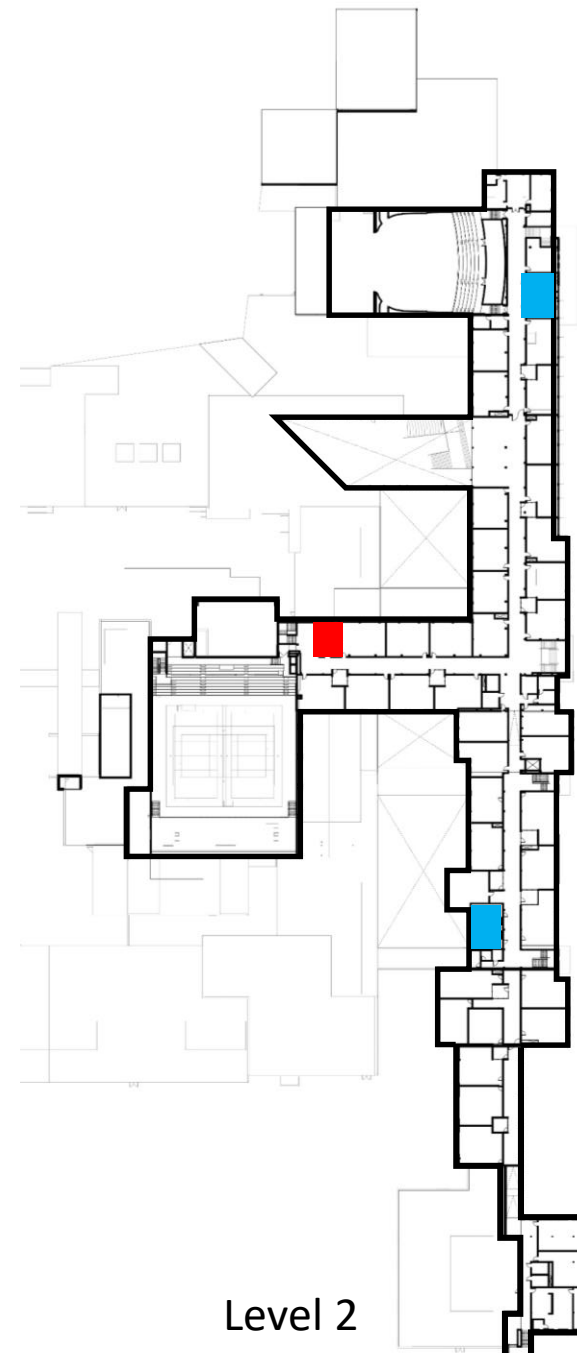
All-Gender Restroom



All-Gender-Ready Restroom



Level 1

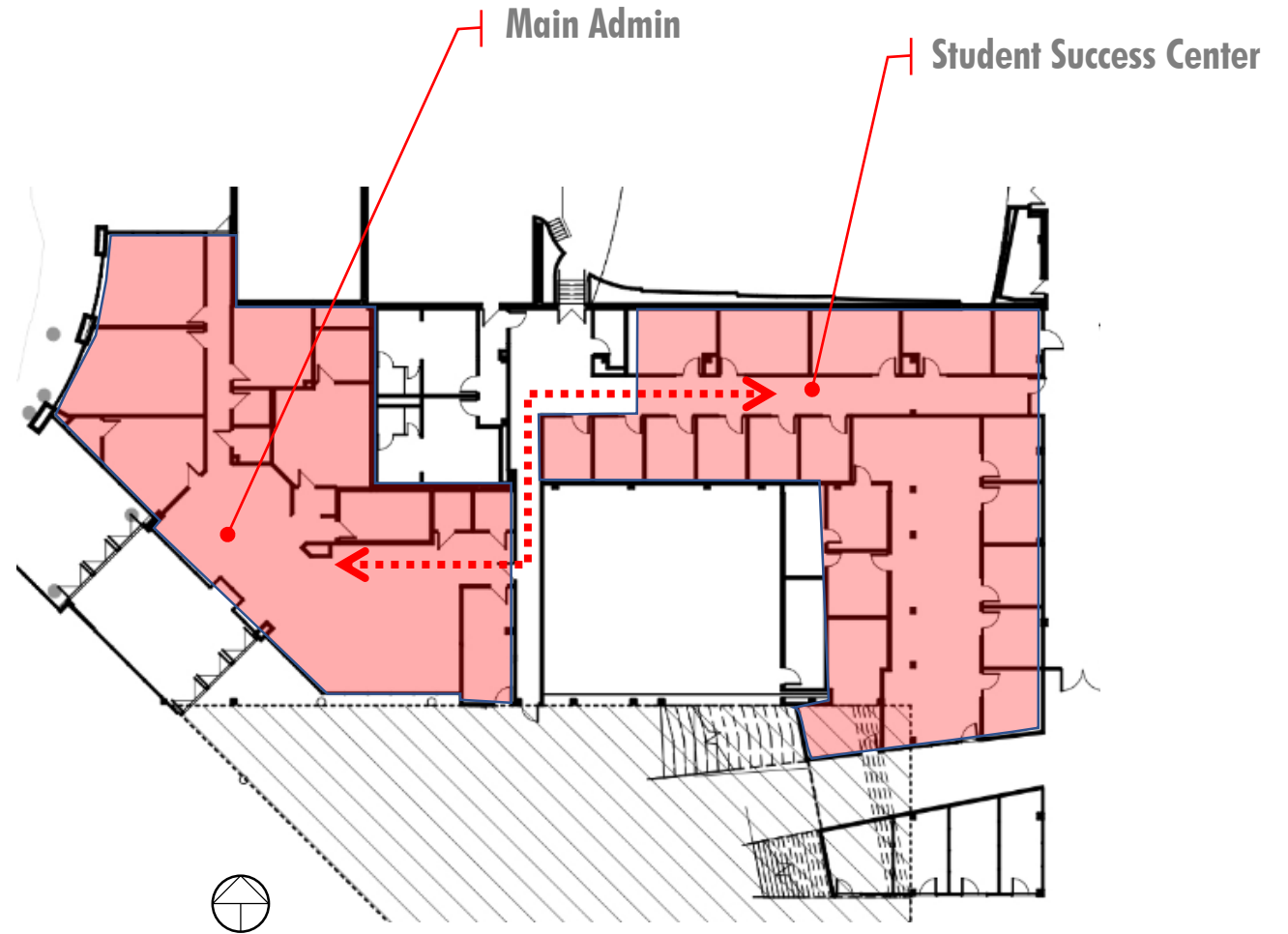


Level 2

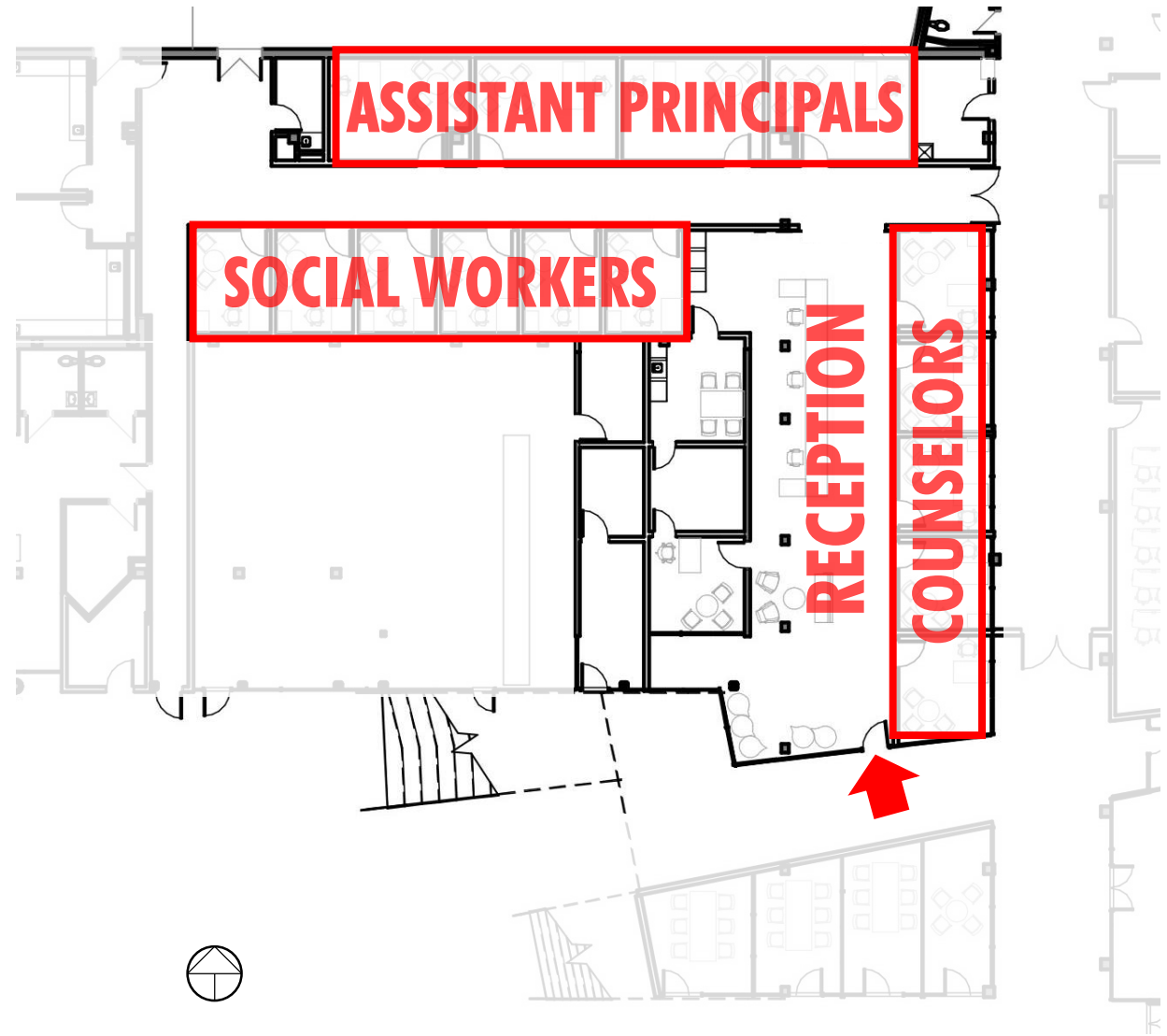


4

## STUDENT SUPPORT + SUCCESS CENTER



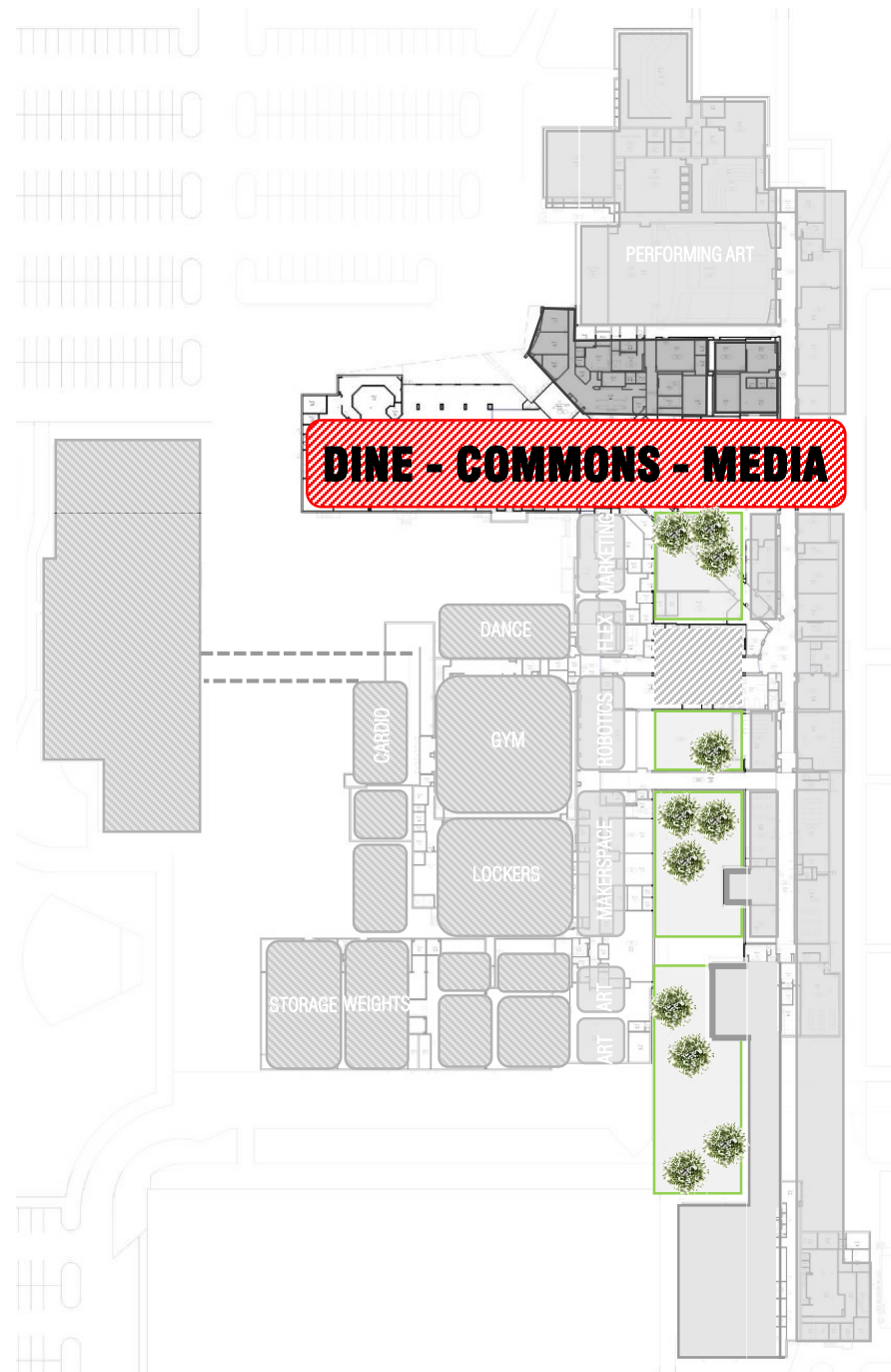




5

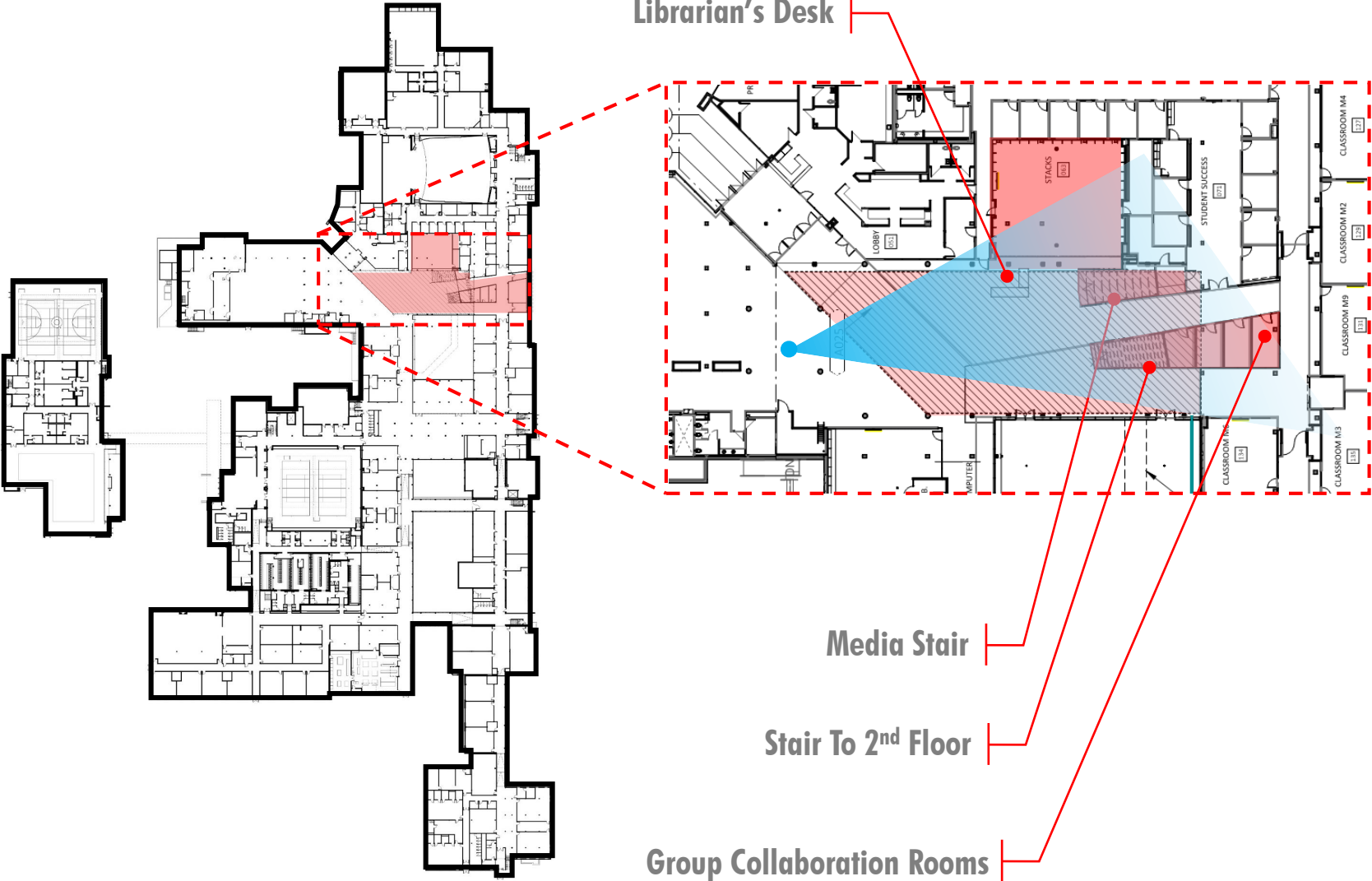
## DINING, COMMONS + MEDIA CENTER

a new entrance to Lawrence High  
School highlighting 21<sup>st</sup> century learning





Existing Entrance



Librarian's Desk

Media Stair

Stair To 2<sup>nd</sup> Floor

Group Collaboration Rooms

Learning Stair | Stair To 2<sup>nd</sup> Floor | Open Study / Stacks | Outdoor Dining | To Innovations District



View Toward Entrance to Media Center and Innovation Corridor



IT / Genius Bar

Stacks

Learning Stair

Pitch Space

Stair To 2<sup>nd</sup> Floor

Breakout Rooms

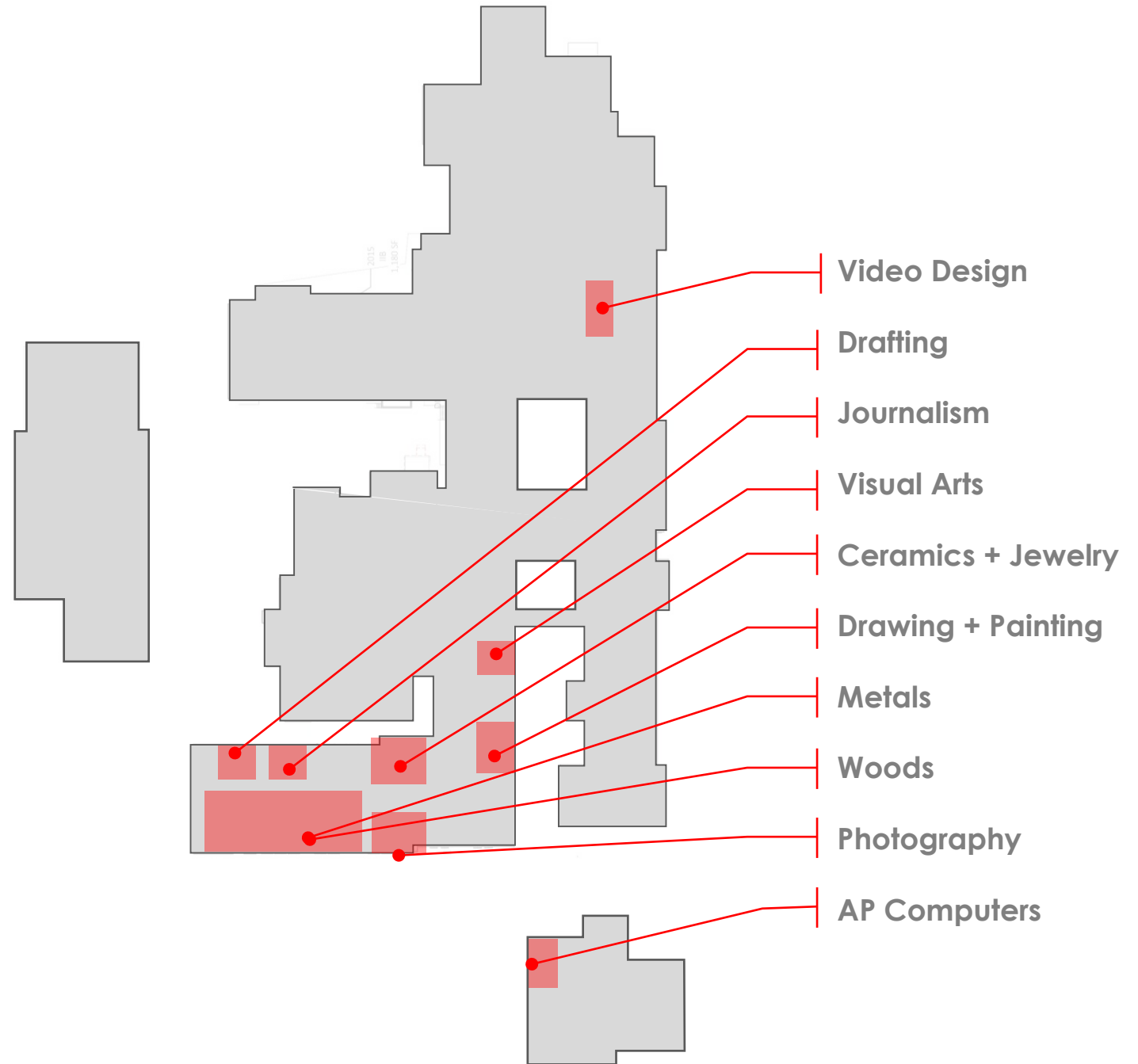


View Toward Media Center

6

# INNOVATION CORRIDOR

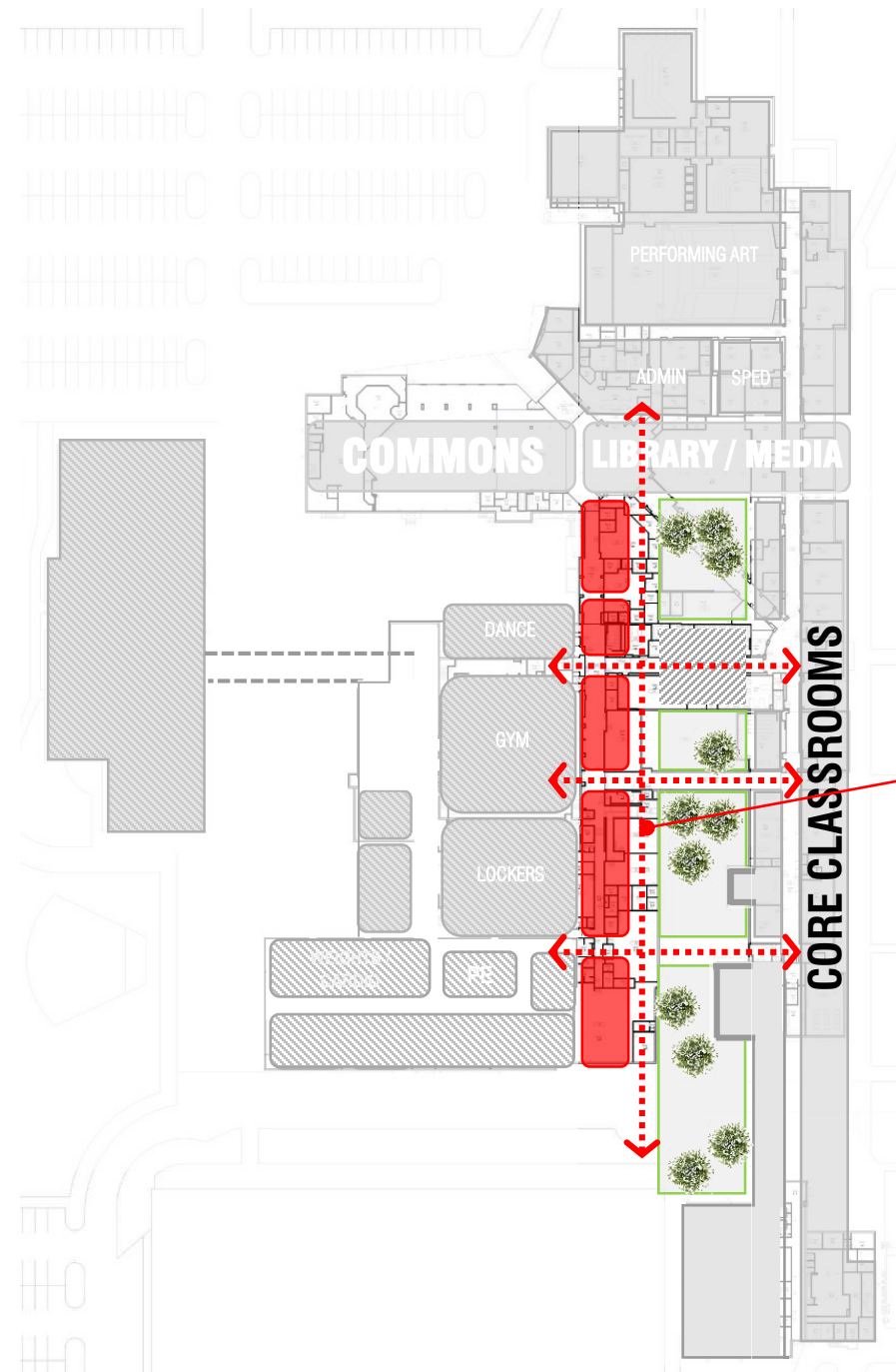
existing



6

## INNOVATION CORRIDOR

a central resource where  
classrooms and innovation  
programs meet in a daylight, wide,  
and flexible corridor

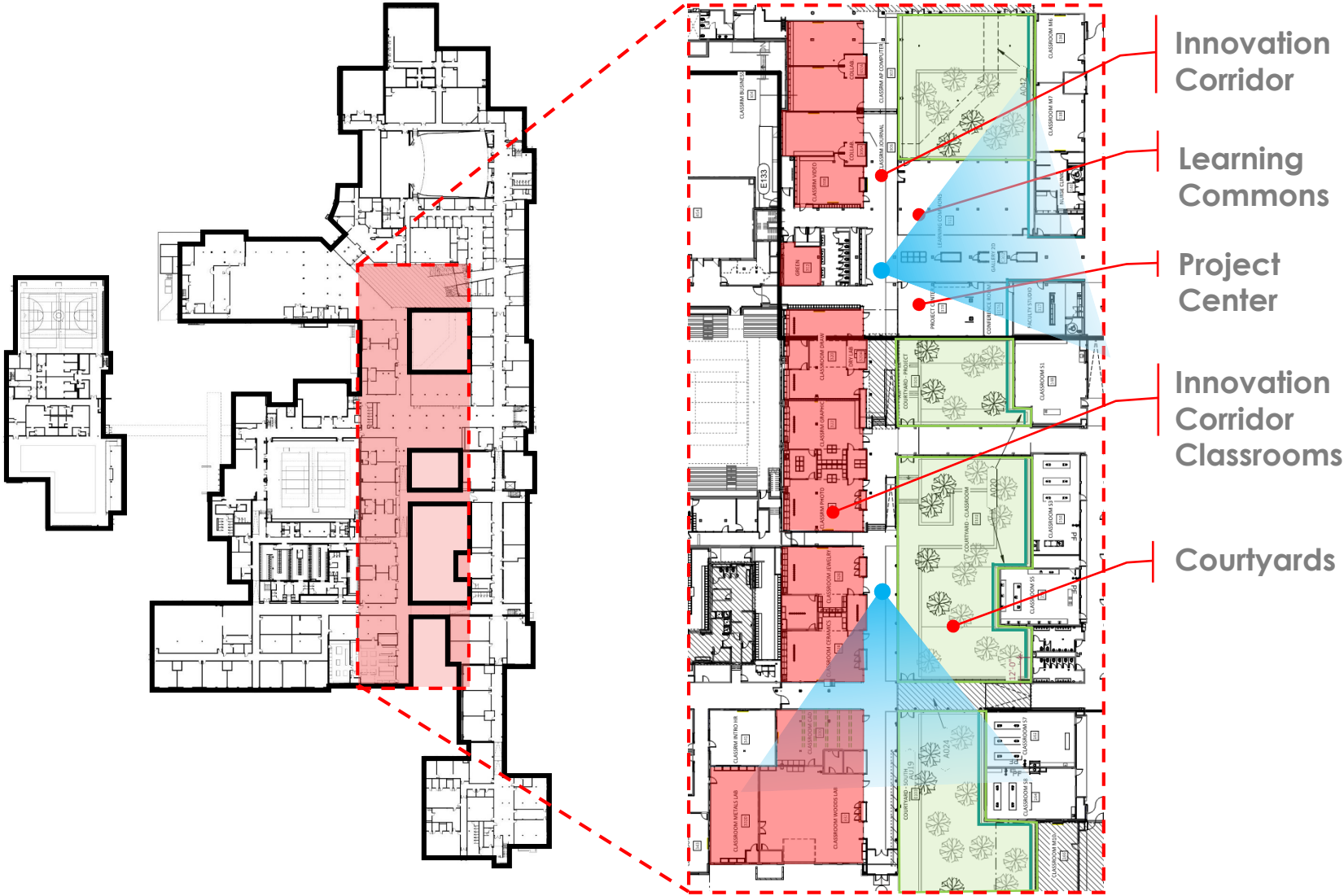


AP Computers  
Video Design  
Photography  
Journalism  
Ceramics  
Jewelry  
Drawing + Painting  
Drafting  
Metals  
Woods





Existing Fine Arts Hallway





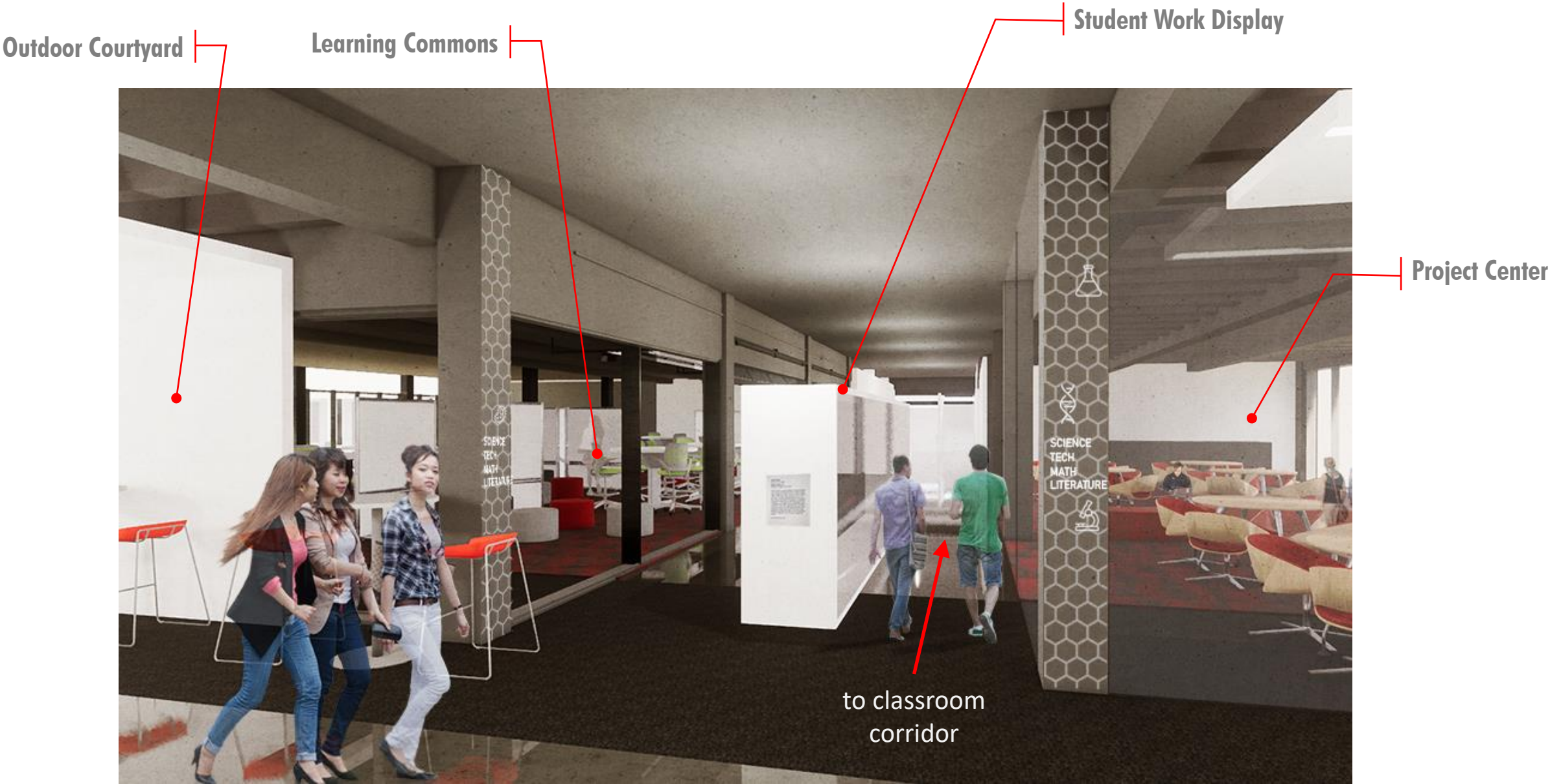
Outdoor Courtyard

Front Porch Space

Student Work Display



View through Innovations Corridor



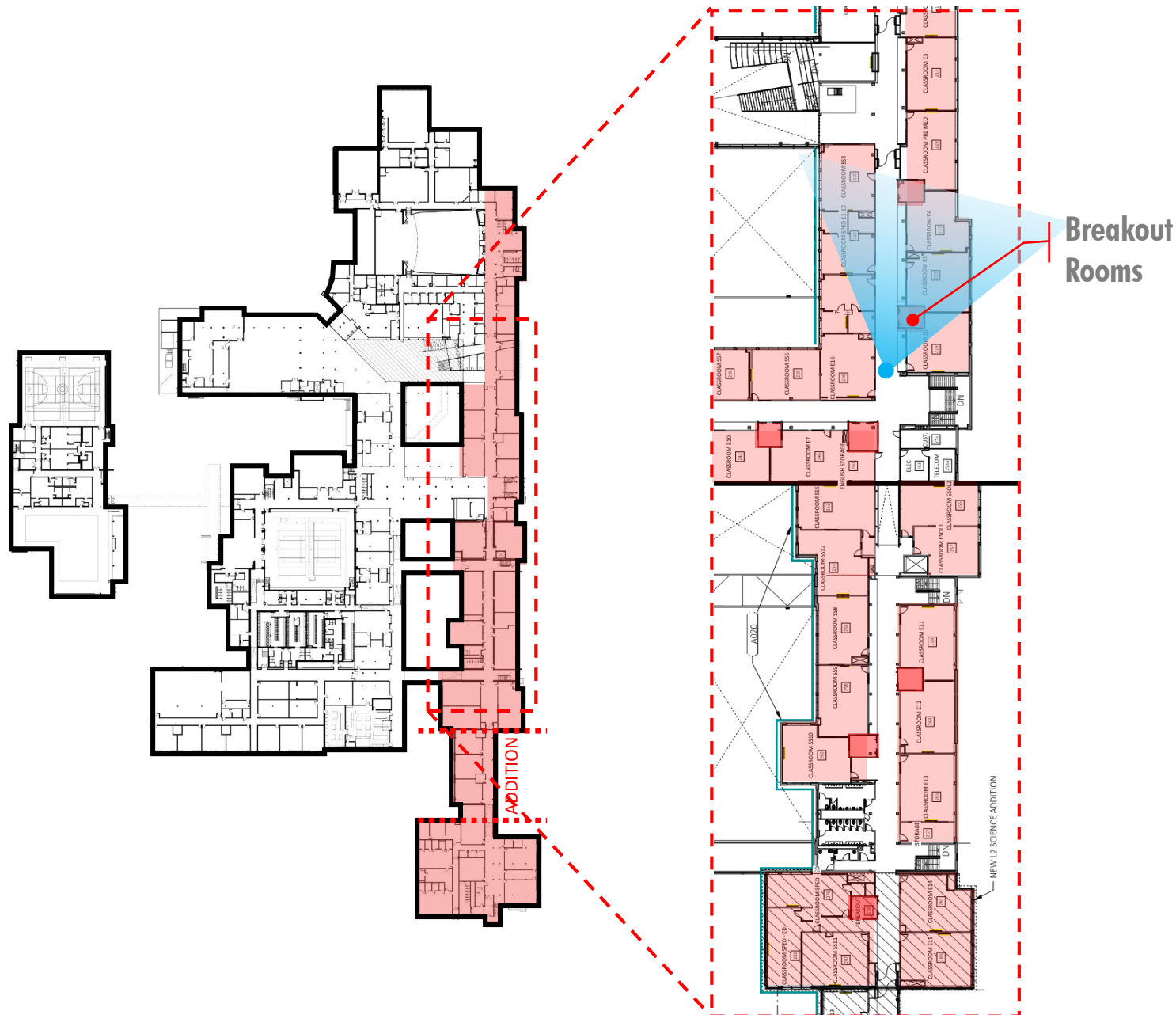
View toward Learning Commons and Project Center



7

# CLASSROOM CORRIDOR

29% of LHS classrooms meet  
district ideal classroom sizes  
vs. 90% of FSHS



New Classroom Corridor (Level 2)

Front Porch Space

Breakout Room

Typical Classroom

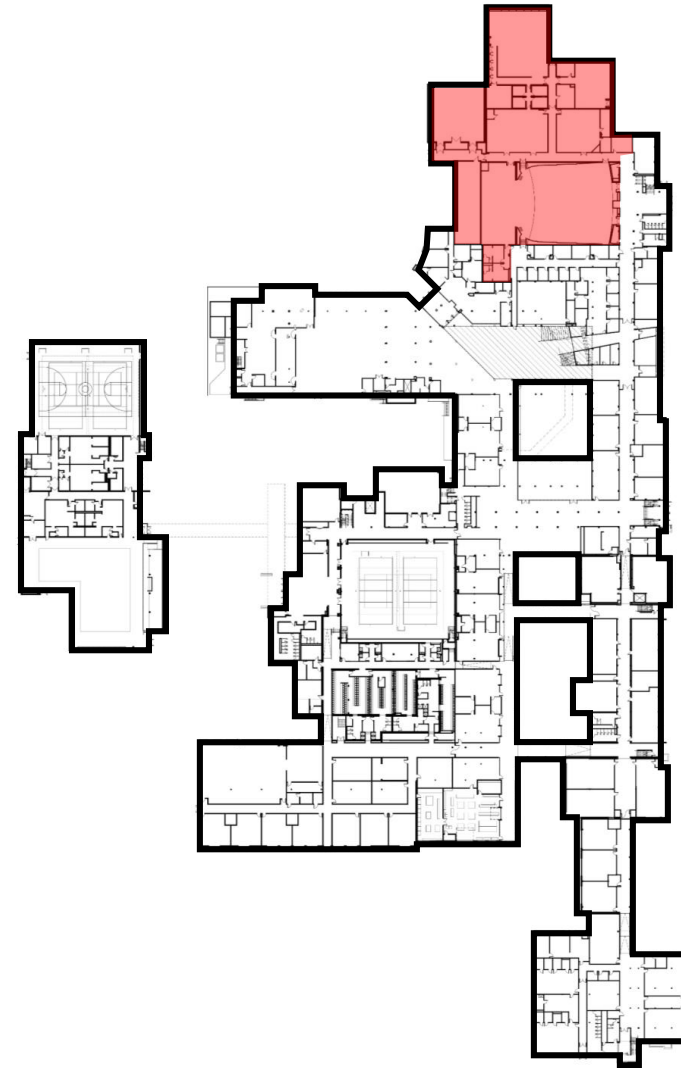


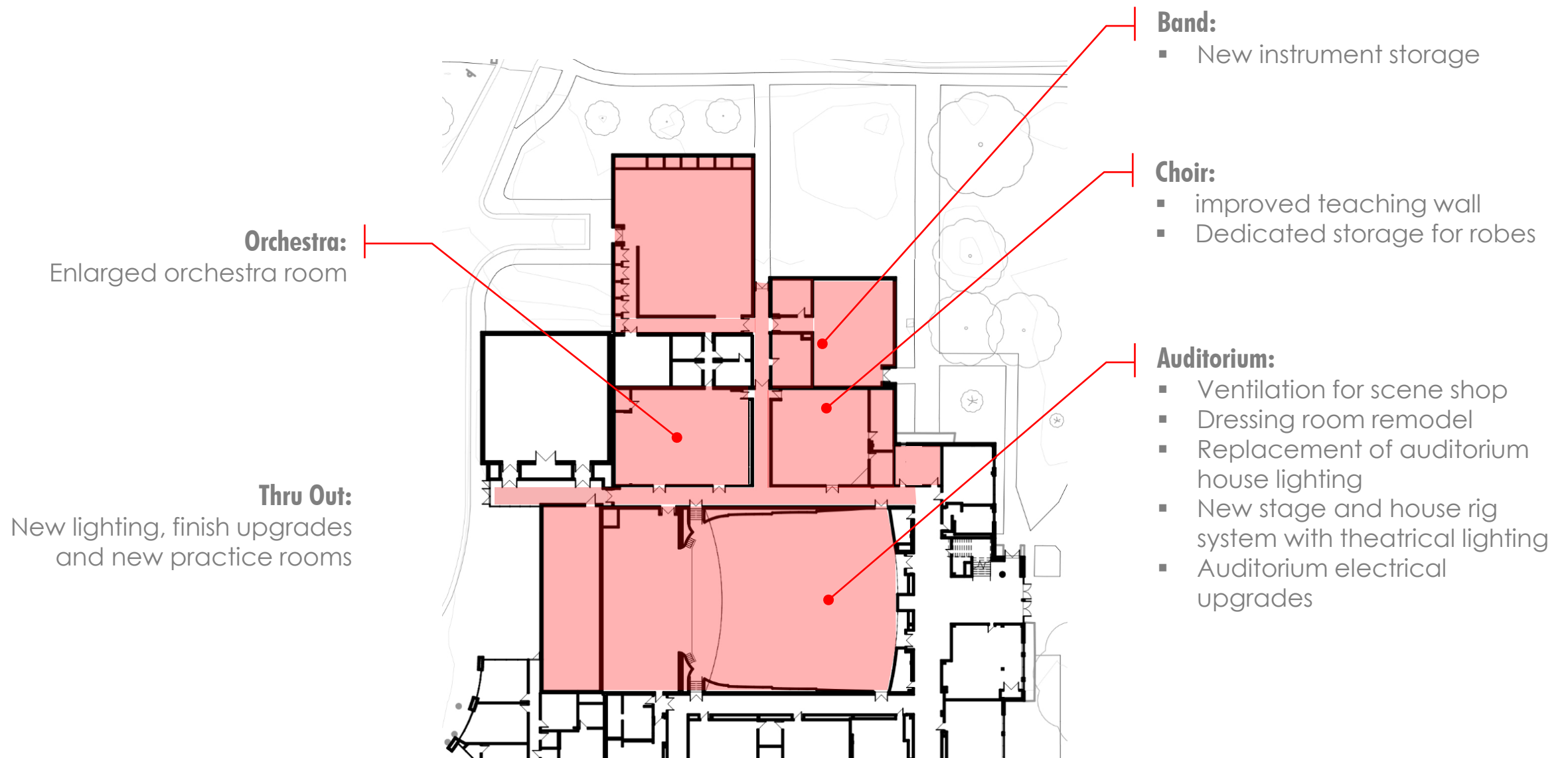
Typical Classroom Corridor

# 8

## PERFORMING ARTS

a critical aspect of the culture at LHS;  
however, with the Masterplan focused  
on general classrooms, it was unknown  
how much work could be done to  
performing arts . . .

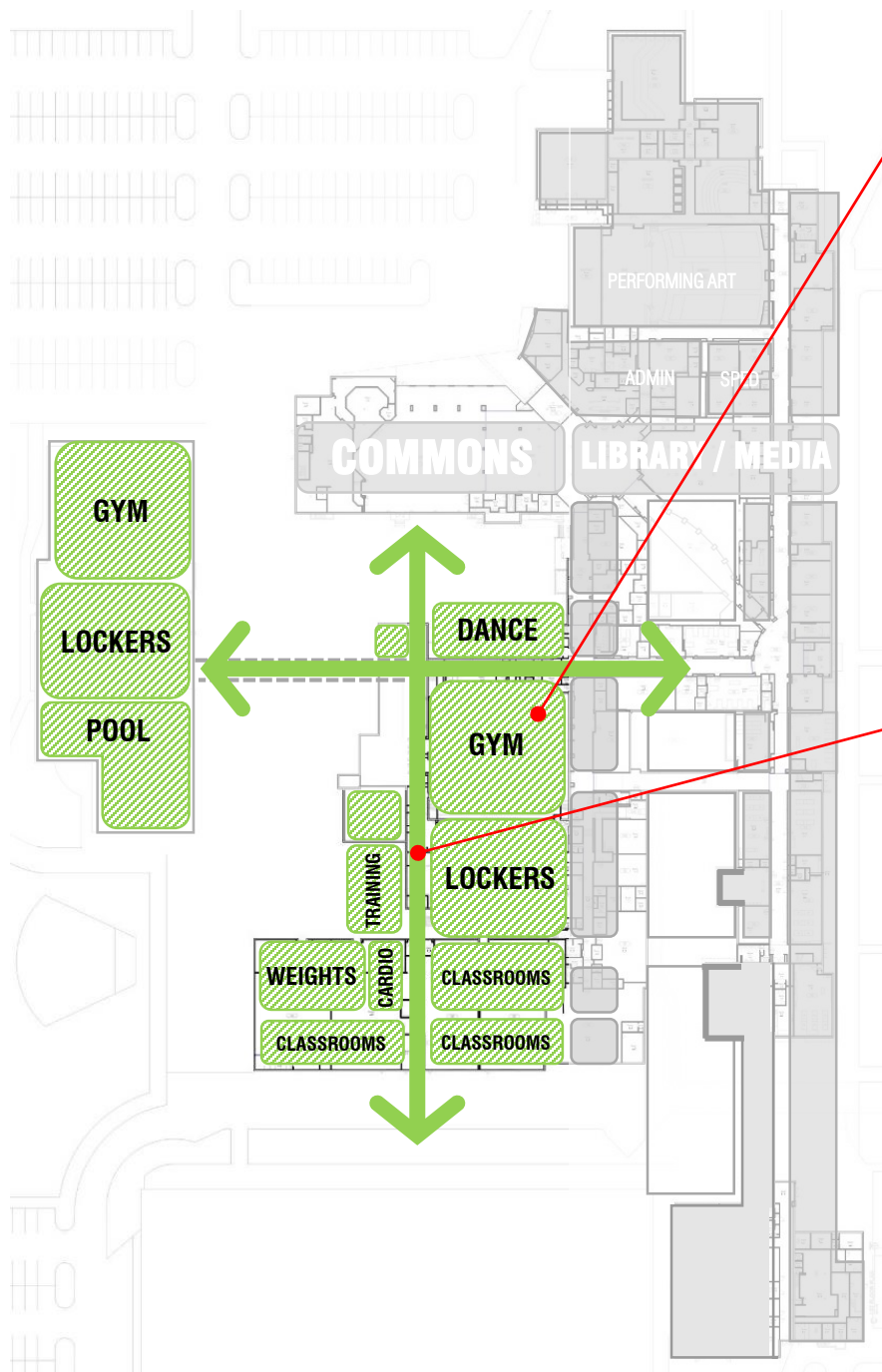




9

## WELLNESS + ATHLETICS

consolidating programs that speak to the related initiatives of health, wellness, nutrition, and fitness



### Programs:

- Gymnasiums
- Cardio
- Dance
- Weights
- Culinary
- Health classrooms
- Athletic/PE locker rooms

### Corridor:

- Entry to gym
- Connectivity between wellness programs

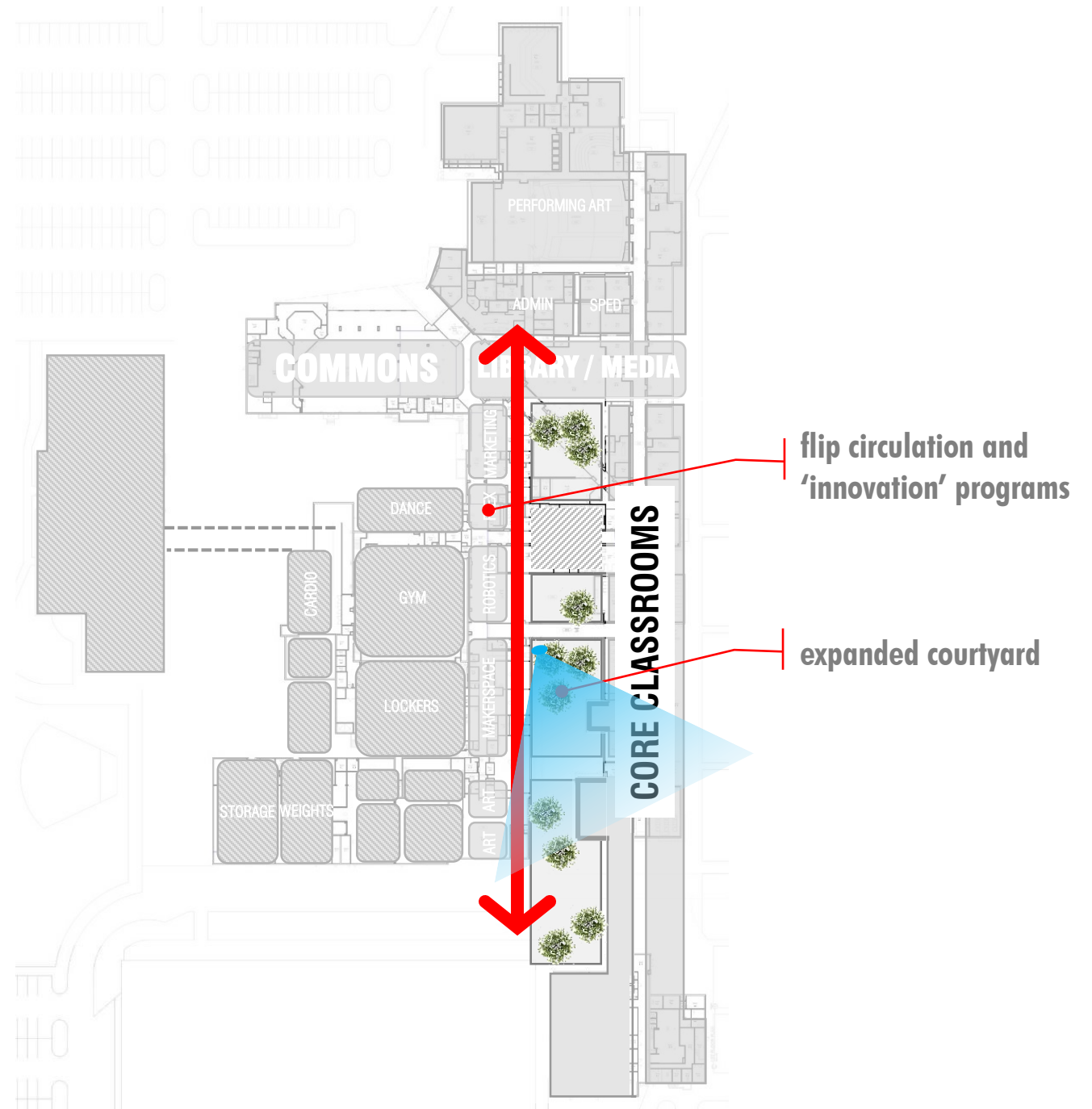




10

## OUTDOOR LEARNING SPACE

serving a new circulation spine, providing outdoor learning opportunities and daylight to ALL core classrooms



Outdoor Learning

Outdoor Eating

Front Porch Space



View in New Courtyard

# BUILDING SYSTEM UPGRADES

New classroom LED lighting with improved controllability.

New, high-efficiency, individually controlled mechanical system in classrooms

Aging existing roofing to be replaced / repaired.

Site design coordinated with facilities and maintenance

# OVERALL SCOPE OF WORK

All of LHS is being touched!

### Light Renovation:

- Performing Arts\*
- Main Gym
- Natatorium
- Auxiliary Gym
- Natatorium / Auxiliary Gym Lobby\*
- Existing Science Lab Upgrades\*
- Secure Entry Window to Admin\*
- New Windows on Annex\*

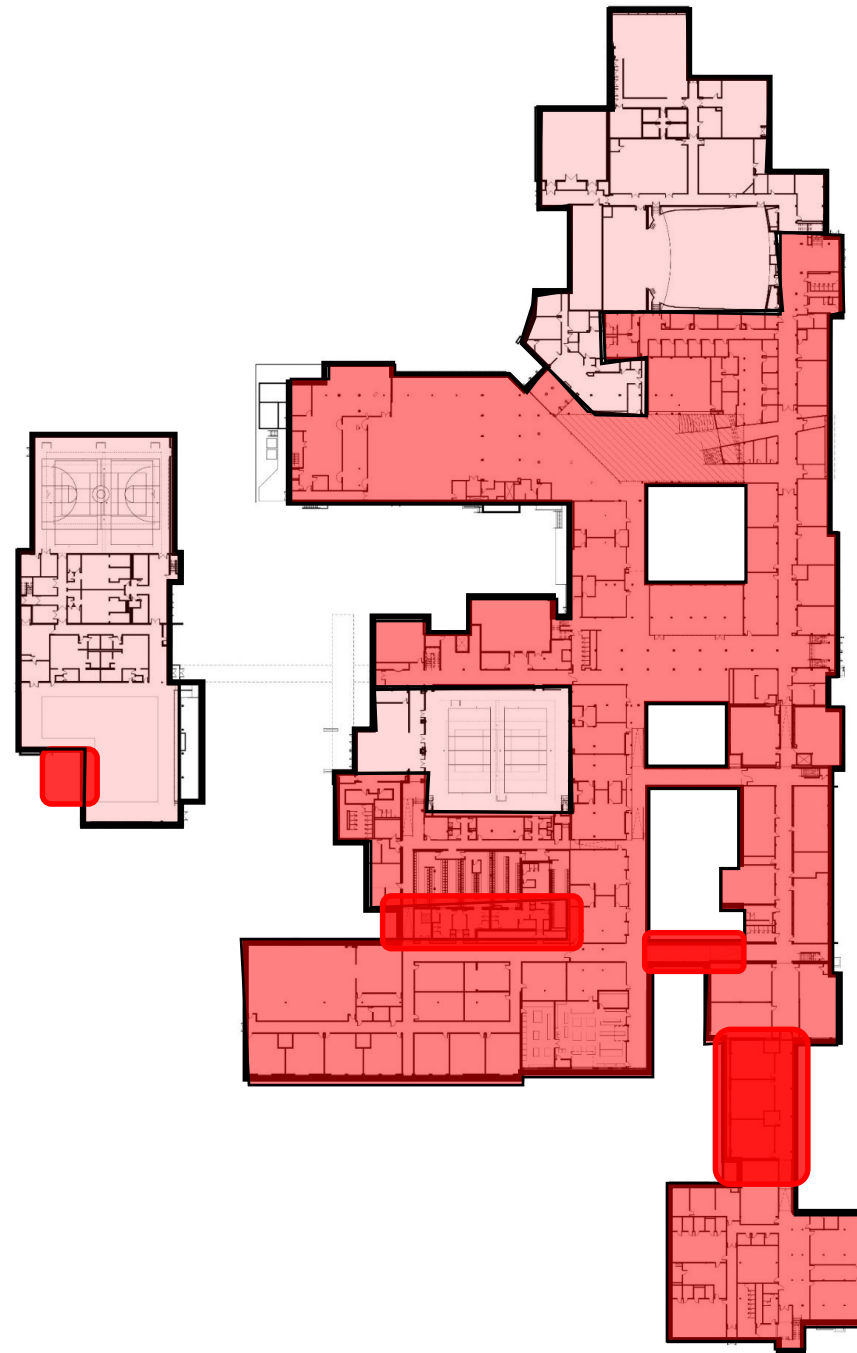
### Major Renovations:

- Kitchen
- Dining
- All Classrooms
- Locker Rooms – Athletic and PE

### Additions:

- Link between Existing High School and Annex
- Locker Rooms
- Circulation
- Natatorium

\* Scope above and beyond original masterplan scope



# CONSTRUCTION PHASING

Separation of school and construction

Move sensitive or costly programs one time

Larger contiguous blocks of construction

Majority of classrooms done by Spring 2021

27 months

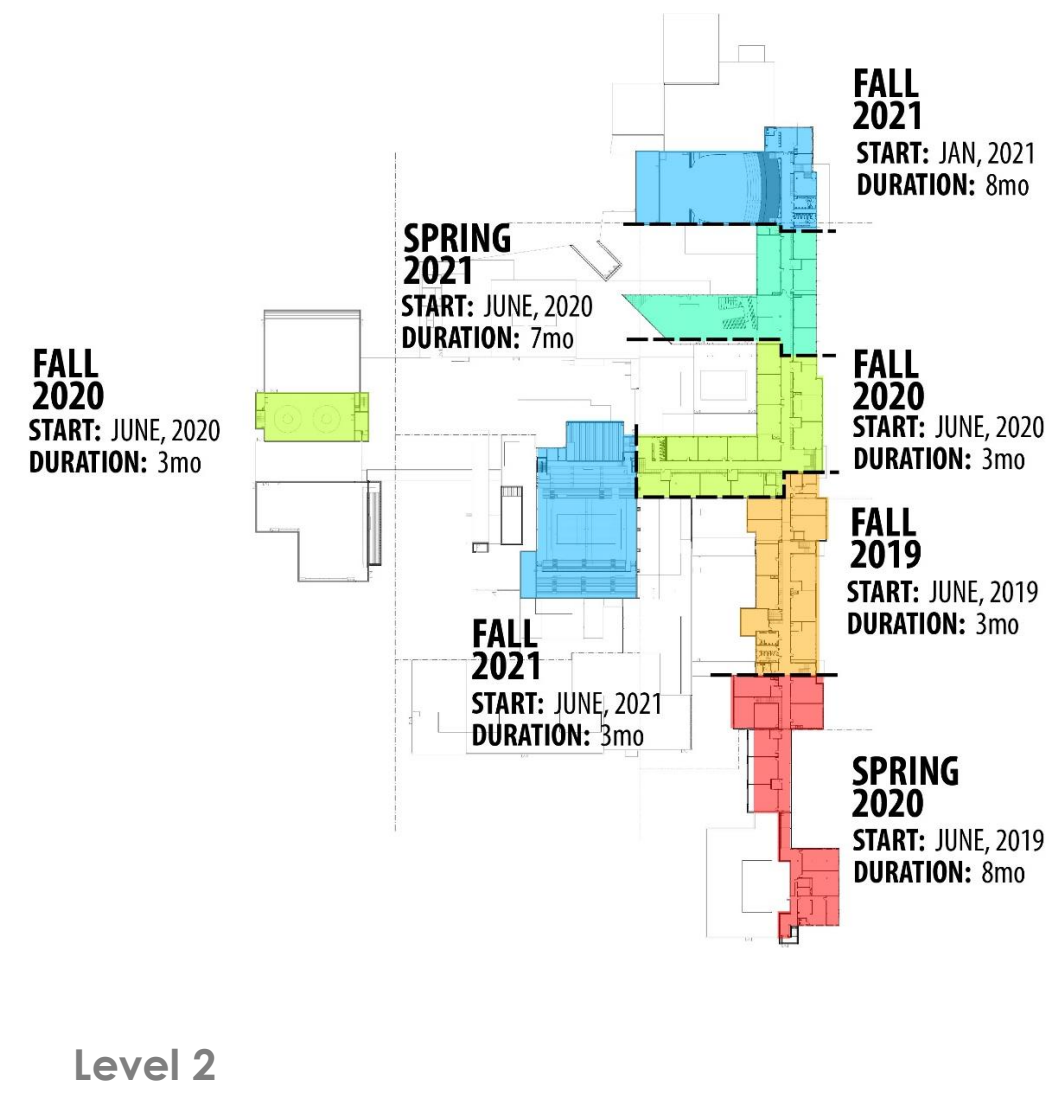
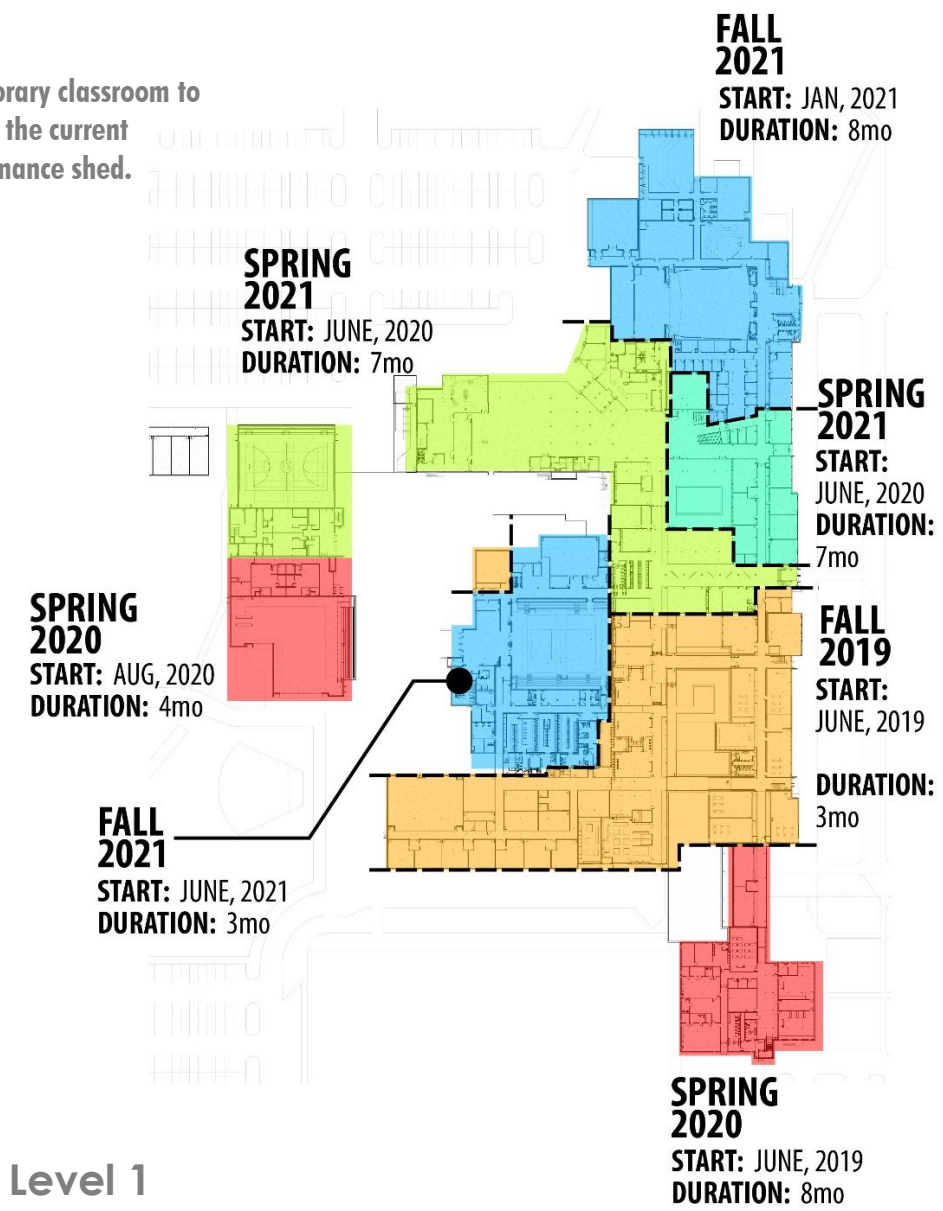
Stack construction zones

Consistent trade scope from phase to phase

Minimize phasing costs



\*Temporary classroom to  
built in the current  
maintenance shed.



# LAWRENCE HIGH SCHOOL BUDGET

|   |              |
|---|--------------|
| Base Budget   | \$44,463,425 |
| Re-Allocated Contingency for<br>Alternates / Additional Scope | \$ 1,728,068 |
| Final GMP   | \$46,191,493 |

(District still carrying \$1,000,000 in Owner Contingency)



# ACCEPTED ALTERNATES

Auditorium Theatrical Lighting

Auditorium Front of House Motorized Rig

Auditorium Stage Motorized Rig

Annex Window Replacement

Kitchen Equipment

West Gym and Natatorium Painting

# THANK YOU

